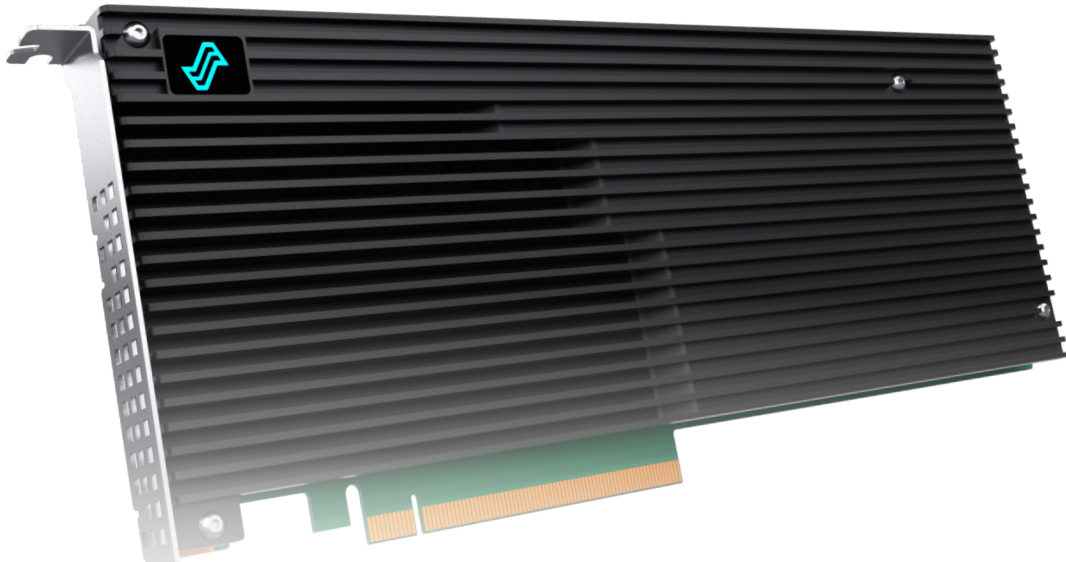




Element LQD4500
PCIe AIC SSD Specifications



Superior Performance

The Liqid Element LQD4500 PCIe Add-In-Card (AIC) features high storage capacity density and extreme performance for mission critical and performance-demanding workloads. It is an ultra-thin, standard form factor full-height full-length (FHFL) card that works seamlessly with systems that have existing PCIe slots. This makes the Element LQD4500 ideal for deployment in data center and enterprise applications.

The Element LQD4500 offers a Gen 4.0 x16 PCIe interface, which enables high throughput and low latency transactions and utilizes the latest NVMe protocol in order to deliver increased performance and efficiency from a single device. The LQD4500 outperforms legacy architectures by delivering up to 4 M IOPS of random performance, and over 26 GB/s of throughput, and ultra-low transactional latency of 10 us.

The Element LQD4500 innovative design enables multiple NVMe device configurations for maximum performance and flexibility. The LQD4500 also features enterprise-class power fail protection, ensuring data is persisted to flash in the event of sudden power loss.

- > Ultra Fast PCIe Gen 4.0 x16 Interface
- > Performance of 4 M IOPS and 26 GB/s
- > High-capacity NVMe SSD, up to 32 TB
- > Enterprise-class Power Failure Protection

Key Features

- High Performance PCIe SSD
- Ultra Fast PCIe 4.0 x16 Interface
- NVMe 1.3 Protocol Supported
- High Capacity Design, up to 32 TB
- Standard Form Factor SSD
- Single Width FHFL Card
- Plug-n-Play Compatibility
- UEFI Boot Support
- Enterprise Grade Reliability
- Power Loss Data Protection
- Active Thermal Throttling
- Active Power Management
- Advanced ECC and Data Protection
- Advanced Error Recovery
- Active Telemetry Monitoring
- Low Overhead Architecture
- No Host CPU or DRAM Off Load
- Software or OS RAID Supported Data Protection



Element LQD4500
PCIe AIC SSD Specifications

Specification

Model: Element LQD4500 PCIe AIC SSD

Raw Capacity	Up to 32 TB
NAND Type	TLC 3D NAND
Read Bandwidth (GB/s)	~26
Write Bandwidth (GB/s)	~13
Ran. Read IOPS (4k)	~4,000,000
Ran. Write IOPS (4k)	~2,000,000
Read Access Latency	~70 µs
Write Access Latency	~10 µs
Protocol	NVMe 1.3
Bus Interface	PCI Express 4.0 x16
Endurance	Up to 61.53 PBW / 2 DWPD*
Security	AES Data Encryption
Weight	20 oz
Warranty	3 years or maximum endurance used
Form Factor	Standard Form Factor FHFL Card
Temperature	Op: 0 to 55 deg C Non-Op: -40 to 75 deg C
Power	Active: ~65 W Typical Input: 12 V Only (optional aux power cable)
Air Flow	Min 400 LFM
Humidity	5% to 95% (non-condensing)
Altitude	0 ft to 10,000 ft
Operating Environments	Windows, Windows Server RHEL; SLES; CentOS, Solaris, SUSE, VMware
Agency & Safety	UL, CB, CE, CCS, KCC, HF, BSMI, VCCI, FCC Class B and CISPR Class B, JEDEC

*PBW/DWPD table per capacity/configuration available upon request

Data Center Selection

- L4500-007T68-040**
7.68TB, 983, NVMe PCIe Gen 4.0 x16 FHFL AIC SSD
- L4500-015T36-040**
15.36TB, 983, NVMe PCIe Gen 4.0 x16 FHFL AIC SSD
- L4500-030T72-040**
30.72TB, 983, NVMe PCIe Gen 4.0 x16 FHFL AIC SSD

Enterprise Selection

- L4500-006T40-040**
6.40TB, 983, NVMe PCIe Gen 4.0 x16 FHFL AIC SSD
- L4500-012T80-040**
12.80TB, 983, NVMe PCIe Gen 4.0 x16 FHFL AIC SSD
- L4500-025T60-040**
25.60TB, 983, NVMe PCIe Gen 4.0 x16 FHFL AIC SSD

Please contact your sales rep for more information and to determine which configuration is best for use. Specification subject to change without notice.

Contact Information

Liquid Inc.
11400 Westmoor Circle, Suite 225
Westminster, CO 80021
office: +1 303.500.1551
email: sales@liquid.com

About Liquid

A leader in composable infrastructure, Liquid enables users to configure and manage physical, bare-metal server systems in seconds. Storage, compute, networking and graphics processing devices are interconnected over PCI-Express fabric to deliver dynamically configurable bare-metal servers perfectly sized with the exact physical resources required by the application being deployed.