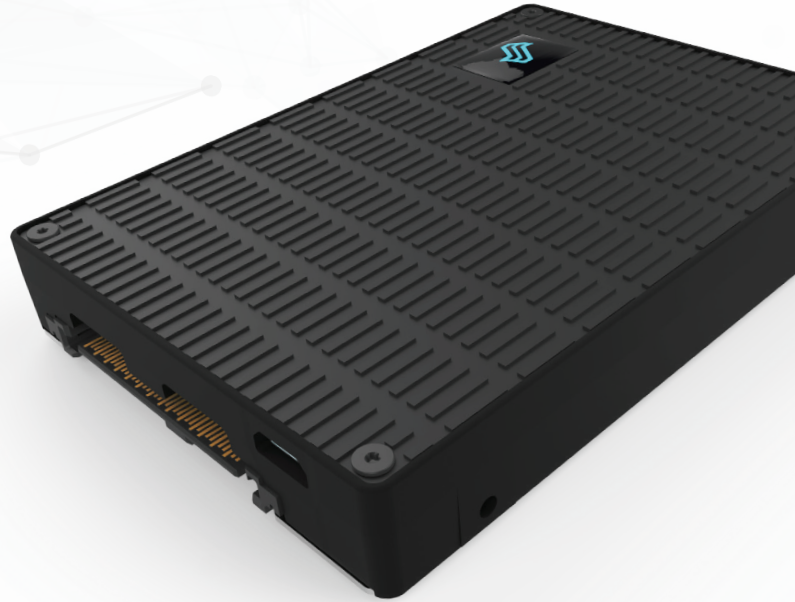




LIQID

Element
PCIe U.2 SSD Specifications



Blistering Pace

The Liquid Element 2.5" U.2 NVMe SSD features high storage capacity and extreme performance for mission-critical and performance-demanding workloads. It is a standard form factor 2.5" 15 mm design that works seamlessly with systems that have existing 2.5" U.2 NVMe slots. This makes the Element U.2 ideal for deployment in data center and enterprise applications.

The Element U.2 offers a hot plugable Gen 3.0 x4 PCIe interface with Dual Port capability, which enables high throughput and high availability and utilizes the latest NVMe protocol in order to deliver increased performance and efficiency from a single device. The U.2 outperforms legacy architectures by delivering 850 K IOPS of random performance, over 3.6 GB/s of throughput, and ultra-low transactional latency of 20 us.

The Element U.2's innovative design enables multiple drive configuration ranging from maximum performance to maximum redundancy. The U.2 also features enterprise-class power failure protection for increased reliability to prevent data loss and ensure uninterrupted work in case of power failure.

- > 3.0 x4 Dual Port Interface
- > 3.6 GB/s to 850 K IOPS
- > High-capacity NVMe SSD, up to 4 TB
- > Enterprise-class Power Failure Protection

Key Features

- High Performance PCIe SSD
- Ultra Fast PCIe 3.0 x4 Interface
- NVMe 1.1a Protocol Supported
- High Capacity Design, up to 4 TB
- Standard Form Factor SSD
- 2.5" U.2 Form Factor
- Plug-n-Play Compatibility
- UEFI Boot Support
- Enterprise Grade Reliability
- Power Loss Data Protection
- Dual Port (x2 x2 Active/Active)
- Hot Plug
- Active Thermal Throttling
- Active Power Management
- Advanced ECC and Data Protection
- Advanced Error Recovery
- Active Telemetry Monitoring
- Low Overhead Architecture
- No Host CPU or DRAM Off Load
- RAID on Card Supported Data Protection



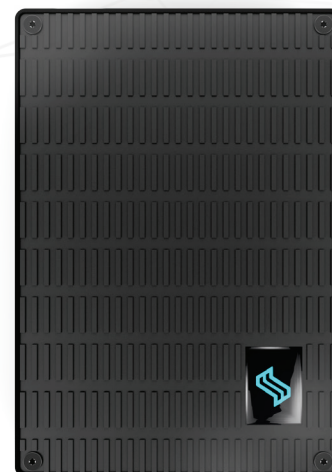
LIQID

Element
PCIe AIC SSD Specifications

Specification

Model: Element PCIe AIC SSD

Raw Capacity	Up to 4 TB
NAND Type	MLC or TLC
Read Bandwidth (GB/s)	~3.6
Write Bandwidth (GB/s)	~3.6
Ran. Read IOPS (4k)	~850,000
Ran. Write IOPS (4k)	~850,000
Ran. Write IOPS (4k) (SS)	~275,000
Read Access Latency	~80 µs
Write Access Latency	~20 µs
Protocol	NVMe 1.1b
Bus Interface	PCI Express 3.0 x4
Endurance	1-3 DW/Day (configurable)
Security	AES Data Encryption
Redundancy	x2 x2 Dual Port (Active/Active)
Warranty	3 years or maximum endurance used
Form Factor	2.5" U.2 Form Factor
Temperature	Op: 0 to 55 deg C Non-Op: -40 to 75 deg C
Power	Active: ~25 W Typical Input: 12 V Only (optional aux power cable)
Air Flow	Min 400 LFM
Humidity	5% to 95% (non-condensing)
Altitude	0 ft to 10,000 ft
Operating Environments	Windows, Windows Server 2012, 2012 R2 RHEL; SLES; CentOS, Solaris, SUSE, VMware
Agency & Safety	UL, CB, CE, CCS, KCC, HF, BSMI, VCCI, FCC Class B and CISPR Class B, JEDEC



Data Center Selection

LQD-E1EPN04M960G00
960 GB NVMe PCIe Gen 3.0 2x2/1x4 U.2

LQD-E1EPN04M001T92
1.92 TB NVMe PCIe Gen 3.0 2x2/1x4 U.2

LQD-E1EPN04M003T84
3.84 TB NVMe PCIe Gen 3.0 2x2/1x4 U.2

Enterprise Selection

LQD-E1EPN04M001T60
1.60 TB NVMe PCIe Gen 3.0 2x2/1x4 U.2

LQD-E1EPN04M003T20
3.20 TB NVMe PCIe Gen 3.0 2x2/1x4 U.2

LQD-E1EPN04M003T84
3.84 TB NVMe PCIe Gen 3.0 2x2/1x4 U.2

About Liquid

Liquid is redefining how resources are used and managed within the data center by offering its customers an innovative solution to keep pace with the rapidly-changing IT landscape in real-time.

Stay tuned – Big things are surfacing soon.

Contact Information

info@liquid.com
liquid.com

Liquid, Inc.
1408 Horizon Ave., Ste 204
Lafayette, CO 80026
office: +1 303.500.1551